







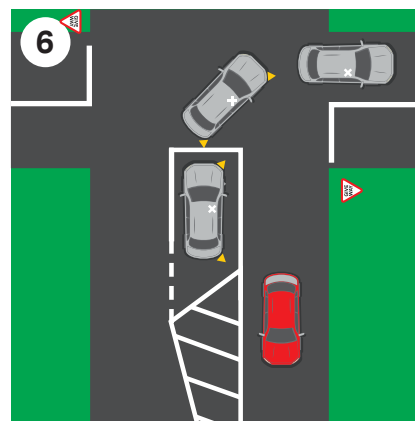
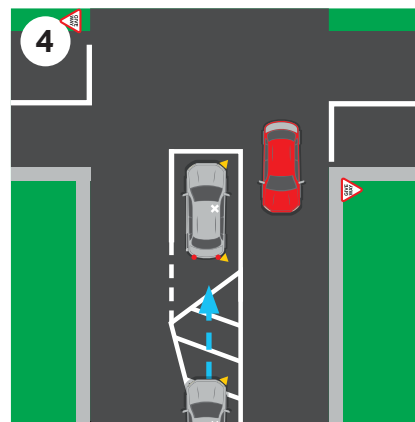
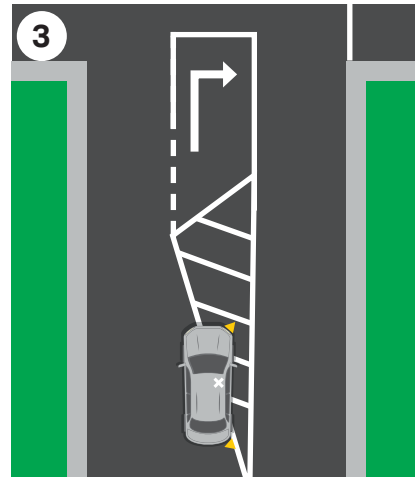
Approach the intersection at such a speed that you can stop.

Slow is smooth, smooth is a pass

Coming in slow gives you time. Time allows you to make good decisions.

Tick when repeated unprompted = habit developed

-  **1 Indicate**
-  **2 Rear view mirror check**
- 3 Move into turning bay at earliest opportunity**
Drive over painted white lines.
-  **4 Drive over painted white lines and over the turning arrow**
If you must stop at the intersection for the appropriate gap selection, stop behind the solid white line. This allows you to move forward before turning and creates a soft, gentle turn.
-  **5 Correct gap selection**
-  **6 DO NOT cut the corner or touch the white lines while driving through the intersection. Touch the white line, you get a fine.**
-  **7 Check your rear view mirror when exiting the intersection.**



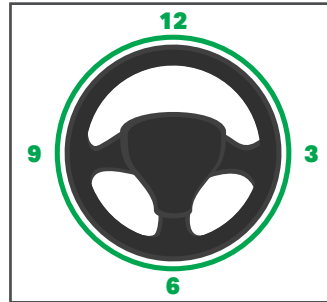
Push pull technique

When turning right drive with your right hand.

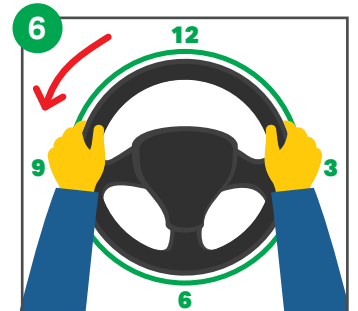
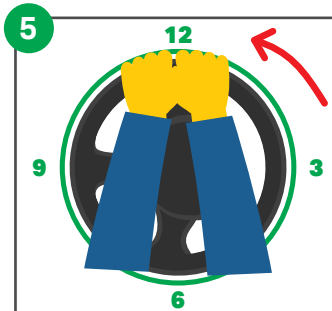
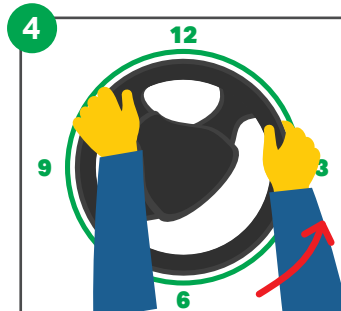
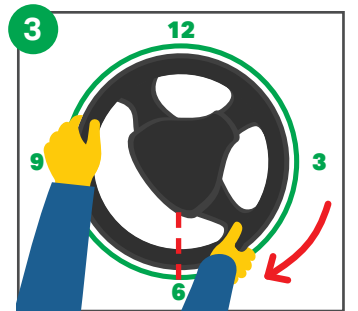
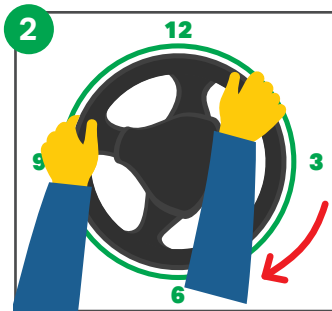
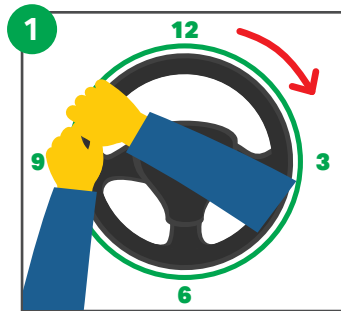
The key to push pulling is big movements.

Hands at 9 and 3 on the steering wheel.

Thumbs should be outside the steering wheel to prevent injury if the airbag deploys.



- 1 Right hand over to the left hand and pull the steering wheel to the right as you are entering the intersection.
- 2 Your left hand stays at the 9 on the steering wheel.
- 3 **DO NOT** go past the 6.
- 4 As you are exiting the intersection, push the steering wheel back up with your right hand.
- 5 Meet your left hand at the top of the steering wheel.
- 6 The left hand takes over the steering back to the 9 on the steering wheel.



Remember, slow is smooth, smooth is a pass.

If you can't push/pull during cornering, you are going too fast!

Always maintain a good scanning pattern.

Looking 12 seconds ahead and mirror checking every 5 - 10 seconds.

