

Approach the intersection at such a speed that you can stop.

**Slow is smooth, smooth is a pass.**

Coming in slow gives you time. Time allows you to make good decisions.

**Tick when repeated unprompted = habit developed**

 **1 DO NOT indicate**

 **2 Rear view mirror check**

Move closer to the centre line to leave room for Bob. **Bob is on his bike. Don't hit Bob!**

 **3 Correct gap selection**

Roundabouts are designed to keep traffic moving.

It is important to watch all entry points to the roundabout and not just the one on your right.

As vehicles come onto the roundabout from different entry points, they create gaps as others have to give way.

Just because a vehicle is indicating a certain way does not mean that is where they are going. People often change their minds or make mistakes. A vehicle will always travel in the direction their tyres are pointing.

Take in the big picture.

Watch all entry points, vehicles, and their tyres to pick the correct gap when entering a roundabout.

**4** If you must stop at an intersection for the appropriate gap selection, stop where you can see traffic coming.

You can move forward of the give way line, but you must not impede cyclists or vehicles traveling through the roundabout.

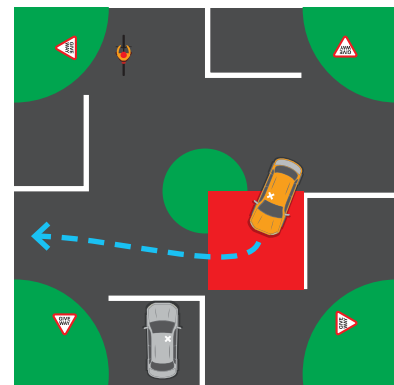
 **5 Indicate left**

Indicate left as you pass the exit before the one you wish to take.

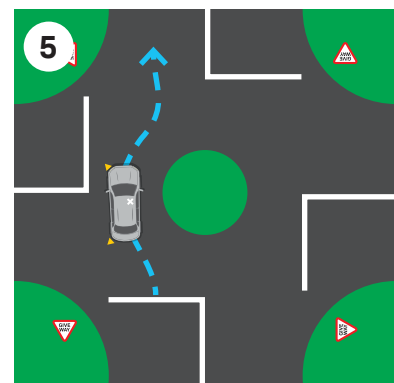
Do not cut the corner or touch the white lines while entering, driving through, or exiting the roundabout. Stay fully in your lane and out of the cycle lanes.

**Touch the white line, you get a fine.**

 **6 Check your rear view mirror when exiting the intersection**



Pictured here is a red zone. If a vehicle is going to pass in front of you and they are already in the red zone you should give way.



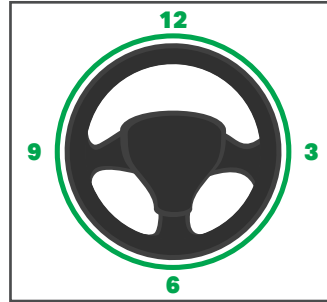
### Push pull technique

When turning right drive with your right hand.

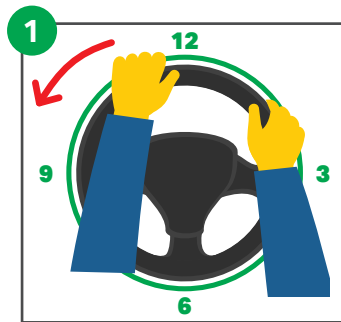
The key to push pulling is big movements.

Hands at 9 and 3 on the steering wheel.

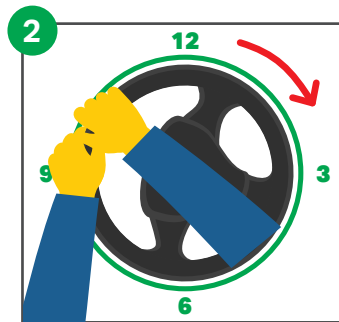
Thumbs should be outside the steering wheel to prevent injury if the airbag deploys. Left hand comes to the top of the steering wheel and pulls down as you are entering the intersection.



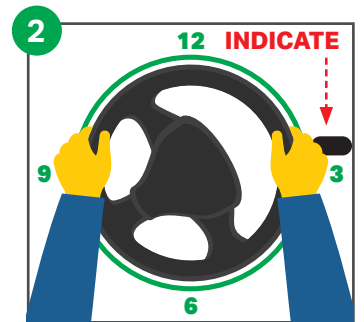
**1** Left hand comes to the top of the steering wheel and pulls the steering wheel to the left.



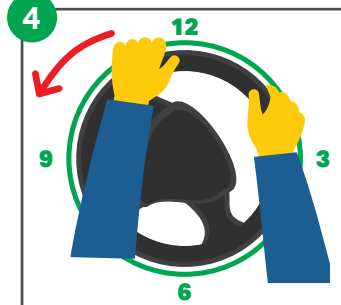
**2** Right hand over to the left hand and pulls the steering wheel to the right.



**3** Your right hand should end up in the right spot to activate your indicator. Holding the steering wheel with your right hand turn your indicator on to the left.



**4** At the same time move your left hand to the top of the steering wheel.



Pull the steering wheel to the left as you exit the roundabout.



### Remember, slow is smooth, smooth is a pass

Accelerate to get the vehicle moving and then take your foot off the accelerator. Once you have your cornering and hands sorted apply **gentle** acceleration to exit the roundabout.

If you can't push/pull during cornering, you are going too fast!

Always maintain a good scanning pattern.

Looking 12 seconds ahead and mirror checking every 5 - 10 seconds.

