



Approach the intersection at such a speed that you can stop.

Slow is smooth, smooth is a pass.

Coming in slow gives you time. Time allows you to make good decisions.

Tick when repeated unprompted = habit developed

-  **1** Indicate left
-  **2** Rear view mirror check
-  **3** Shoulder check to the left

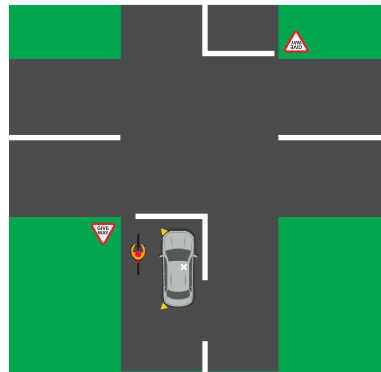
Why do we do a left hand shoulder check?

You are checking for Bob.

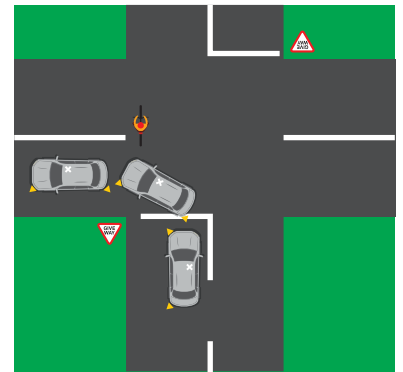
Who is Bob?

Bob is on his bike.

Don't hit Bob!




Leave room to the left for Bob. This will help create a gentle left hand turn.



Do not cut the corner or touch the white lines while driving through the intersection.

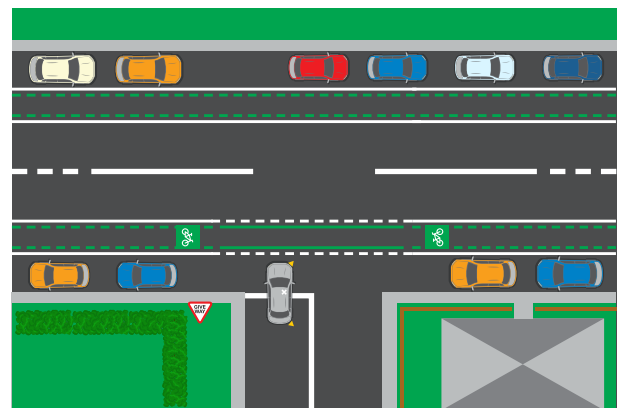
Touch the white line, you get a fine.

-  **4** Correct gap selection

-  **5** Check your rear view mirror when exiting the intersection

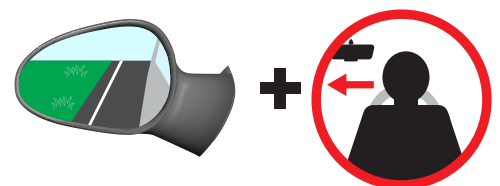
If you must stop at an intersection for the appropriate gap selection, stop where you can see traffic coming from all directions.

You can move forward of the give way or stop line but you **MUST NOT** block the cycle lane or the path of vehicles coming from the right.



If you are stopped at an intersection waiting for a gap or for traffic lights to change, keep an eye on your left hand wing mirror and conduct a second shoulder check before you turn.

Bob is very fast and sneaky on his bike. **Don't hit Bob!**



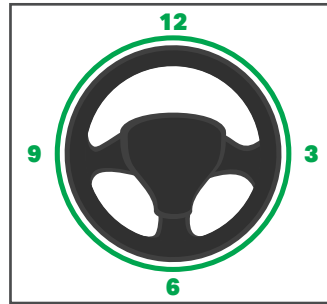
Push pull technique

When turning left, drive with your left hand.

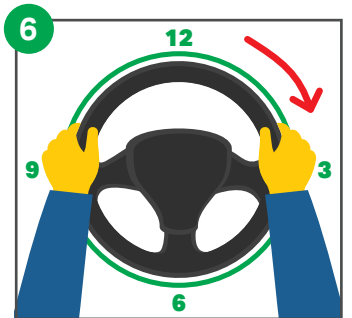
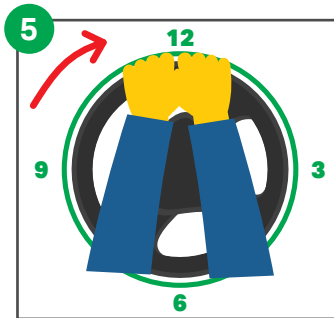
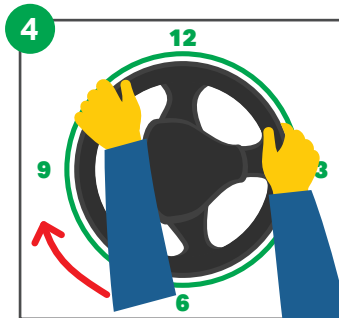
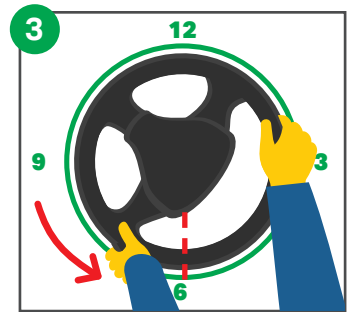
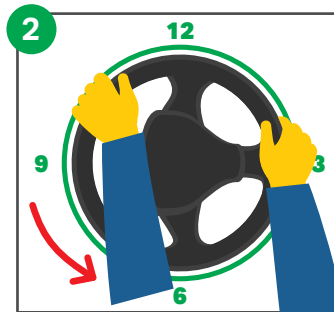
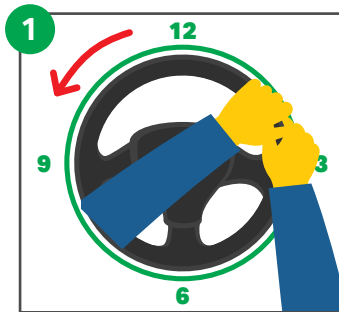
The key to push pulling is big movements.

Hands at 9 and 3 on the steering wheel.

Thumbs should be outside the steering wheel to prevent injury if the airbag deploys.



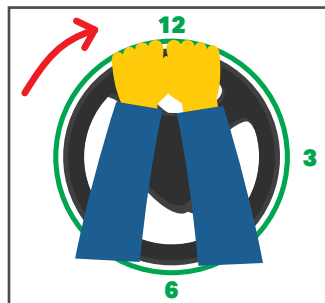
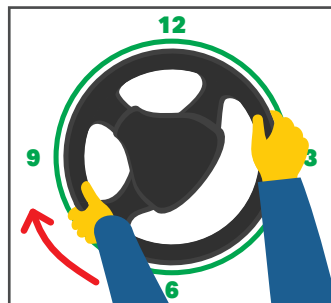
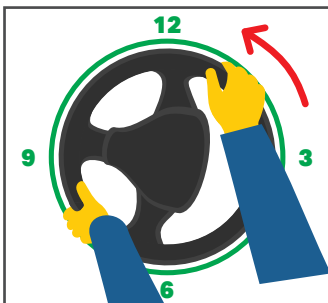
- 1 Left hand over to the right hand and pull the steering wheel to the left as you are entering the intersection.
- 2 Your right hand stays at the 3 on the steering wheel.
- 3 **DO NOT** go past 6.
- 4 As you are exiting the intersection, push the steering wheel back up with your left hand.
- 5 Meet your right hand at the top of the steering wheel.
The right hand takes over the steering back to the 3 on the steering wheel.
- 6



If it is a tight corner slow down

You may need to use your right hand to push the steering wheel up to complete the turn when entering the intersection.

The right hand takes over pushing the wheel back up. If you can't push/pull during cornering, you are going too fast!



Always maintain a good scanning pattern.

Looking 12 seconds ahead and mirror checking every 5 - 10 seconds.

